

DRC

PZ23-12000009
10/02/2024

1. OUTLINE OF THE EXCAVATION IS FOR ILLUSTRATIVE PURPOSES ONLY. ACTUAL TRENCH WITH ANY DEPTH WILL VARY WITH SOIL CONDITIONS. TRENCH SAFETY SHALL BE IN ACCORDANCE WITH THE "FLORIDA TRENCHING ACT" AND ALL TRENCH SAFETY STANDARDS.
2. TYPICAL TRENCH BACKFILL FOR WATER MAIN AND FORCE MAIN INSTALLATION SHALL BE TYPE "A" AS SHOWN IN DETAIL.
3. TYPICAL TRENCH BACKFILL/BEDDING FOR GRAVITY SEWER INSTALLATION SHALL BE TYPE "C" AS SHOWN IN DETAIL.
4. TRENCH BACKFILL BEDDING CLASS "A" OR "B" SHALL BE USED FOR PIPE INSTALLATIONS WHERE UNSUITABLE MATERIALS ARE ENCOUNTERED.
5. TRENCH ZONE BACKFILL SHALL BE MATERIAL TYPE 1 OR TYPES A THRU F. BEDDING MATERIAL SHALL BE PLACED IN 12" LIFTS, AND COMPACTED TO 95% OF THE MATERIAL'S MAXIMUM DENSITY AS DETERMINED BY ASTM D-1557 (AASHTO T-99).
6. BEDDING MATERIAL FOR TYPICAL WATER MAIN AND FORCE MAIN INSTALLATION SHALL BE TYPE C. BEDDING SHALL BE COMPACTED TO 95% OF THE MATERIAL'S MAXIMUM DENSITY AS DETERMINED BY ASTM D-1557 (AASHTO T-180).
7. BEDDING MATERIAL FOR TYPICAL GRAVITY SEWER INSTALLATION AND ANY INSTALLATION WHERE UNSUITABLE TRENCH BOTTOM CONDITIONS ARE FOUND SHALL BE TYPE E. BEDDING SHALL BE PLACED IN LIFTS NOT TO EXCEED 6" AND COMPACTED TO 95% OF THE MATERIAL'S MAXIMUM DENSITY AS DETERMINED BY ASTM D-1557 (AASHTO T-180).
8. UNSUITABLE MATERIAL SHALL BE REMOVED. UNDISTURBED ROCK OR SAND OR TO DEPTH AS SPECIFIED BY ENGINEER. BACKFILL MATERIAL SHALL BE TYPE C. BACKFILL SHALL BE PLACED IN 8" LIFTS COMPACTED TO 95% OF THE MATERIAL'S MAXIMUM DENSITY AS DETERMINED BY ASTM D-1557 (AASHTO T-180).

TRENCH BACKFILL / BEDDING NOTES

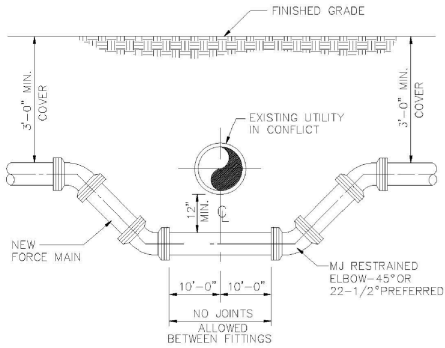
| ENGINEERING STANDARDS 2022 | | | | |
|----------------------------|------|-----------------------|---------------------------|-----------------------------|
| REVISIONS | | ENGINEERING DIVISION | TRENCH BACKFILL / BEDDING | DATE: JUNE 2022 DWG. NO. |
| BY | DATE | | | |
| | | CITY OF POMPAÑO BEACH | | |
| | | SCALE: N.T.S. | | 203-3 |

9. BEDDING TYPES - THE FOLLOWING TYPES OF SUITABLE MATERIALS ARE DESIGNATED AND DEFINED AS FOLLOWING:
- TYPE A: CRUSHED LIMEROCK OR SAND WITH 100 PERCENT PASSING A 1 INCH SIEVE AND A SAND EQUIVALENT VALUE NOT LESS THAN 50.
- TYPE B: CRUSHED LIMEROCK OR SAND WITH 100 PERCENT PASSING A 1/2 INCH SIEVE AND A SAND EQUIVALENT VALUE NOT LESS THAN 50.
- TYPE C: SAND WITH 100 PERCENT PASSING A 3/8 INCH SIEVE, AT LEAST 90 PERCENT PASSING A NUMBER 4 SIEVE, AND A SAND EQUIVALENT VALUE NOT LESS THAN 30.
- TYPE D: CRUSHED LIMEROCK WITH 100 PERCENT PASSING A 1 INCH SIEVE AND NOT MORE THAN 10 PERCENT A NUMBER 4 SIEVE.
- TYPE E: CRUSHED LIMEROCK OR SAND WITH 100 PERCENT PASSING A 3/4 INCH SIEVE AND NOT MORE THAN 10 PERCENT PASSING A NUMBER 4 SIEVE.
- TYPE F: CRUSHED LIMEROCK MEETING THE FOLLOWING GRADATION REQUIREMENTS.

| SIEVE SIZE | PERCENTAGE PASSING |
|------------|--------------------|
| 2 INCH | 100 |
| 1-1/2 INCH | 90-100 |
| 1 INCH | 20-55 |
| 3/4 INCH | 0-15 |
| NO. 200 | 0-3 |

TRENCH BACKFILL / BEDDING NOTES

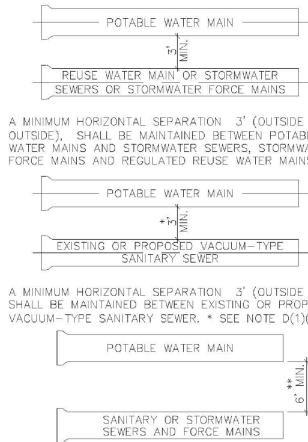
| ENGINEERING STANDARDS 2022 | | | | |
|----------------------------|------|-----------------------|---------------------------|-----------------------------|
| REVISIONS | | ENGINEERING DIVISION | TRENCH BACKFILL / BEDDING | DATE: JUNE 2022 DWG. NO. |
| BY | DATE | | | |
| | | CITY OF POMPAÑO BEACH | | |
| | | SCALE: N.T.S. | | 203-4 |



NOTES:
WHERE CONDITIONS PERMIT, PIPE DEFLECTION MAY BE USED INSTEAD OF BENDS TO OBTAIN THE MINIMUM CLEARANCE. FACTORY OFFSETS MAY BE USED.

TYPICAL CONFLICT DETAIL

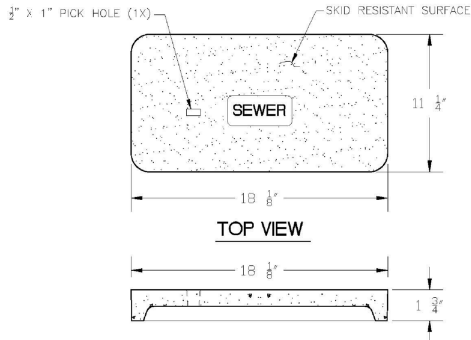
| ENGINEERING STANDARDS 2022 | | | | |
|----------------------------|------|-----------------------|--------------------------|-----------------------------|
| REVISIONS | | ENGINEERING DIVISION | TYPICAL CONFLICT (SEWER) | DATE: JUNE 2022 DWG. NO. |
| BY | DATE | | | |
| | | CITY OF POMPAÑO BEACH | | |
| | | SCALE: N.T.S. | | 206-1 |



A MINIMUM HORIZONTAL SEPARATION OF 6' (OUTSIDE TO OUTSIDE), SHALL BE MAINTAINED BETWEEN POTABLE WATER MAINS AND EXISTING OR PROPOSED GRAVITY-OR PRESSURE TYPE SANITARY SEWER, WASTEWATER FORCE MAIN OR NOT REGULATED REUSE WATER MAIN. ** SEE NOTE D(1)(C).

MINIMUM HORIZONTAL SEPARATION REQUIREMENTS FOR POTABLE WATER, REUSE, STORMWATER AND SEWER LINES

| ENGINEERING STANDARDS 2022 | | | | |
|----------------------------|------|-----------------------|---|-----------------------------|
| REVISIONS | | ENGINEERING DIVISION | MIN. HORIZONTAL SEPARATION FOR SANITARY SEWER | DATE: JUNE 2022 DWG. NO. |
| BY | DATE | | | |
| | | CITY OF POMPAÑO BEACH | | |
| | | SCALE: N.T.S. | | 209-1 |

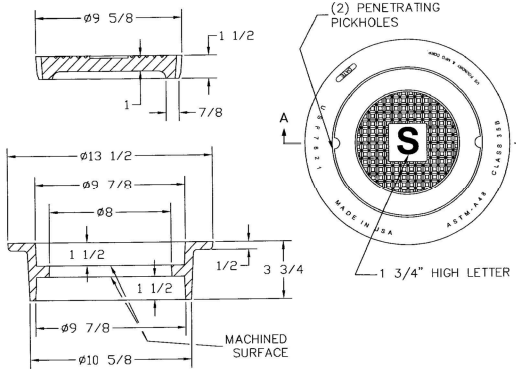


- NOTE
1. MATERIAL: FIBERGLASS REINFORCED POLYMER CONCRETE & FIBERGLASS REINFORCED POLYMER
 2. COLOR: GREEN
 3. LOAD RATING: AB (ASTM C857)
 4. LOGO: SEWER

SEWER BOX AND COVER

| PRODUCT RATING - TRAFFIC | | | | | |
|--------------------------|----------------------|--------------------|-------------------------|---------------------|---------------|
| LOAD DESIGNATION | DESCRIPTION | DESIGN LOADS | TESTING | | |
| | | LINE LBS/WHEEL (2) | LINE + IMPACT LBS/WHEEL | SAFE LOAD (PSF) (3) | SAFETY FACTOR |
| AASHTO H15 | MEDIUM TRUCK TRAFFIC | 12,000 | 15,600 | N/A | 2,700 (5) |

| ENGINEERING STANDARDS 2022 | | | | |
|----------------------------|------|-----------------------|---|-----------------------------|
| REVISIONS | | ENGINEERING DIVISION | SEWER BOX AND COVER CDR Part No. WB04-1118-12 CDR Part No. WC02-1118-02 | DATE: JUNE 2022 DWG. NO. |
| BY | DATE | | | |
| | | CITY OF POMPAÑO BEACH | | |
| | | SCALE: N.T.S. | | 210-2 |



NOTE
MATERIAL: Gray Cast Iron
ASTM-A48 Class 35B

SEWER BOX AND COVER - HEAVY TRAFFIC

| ENGINEERING STANDARDS 2022 | | | | |
|----------------------------|------|-----------------------|-----------------------------------|-----------------------------|
| REVISIONS | | ENGINEERING DIVISION | SEWER BOX AND COVER HEAVY TRAFFIC | DATE: JUNE 2022 DWG. NO. |
| BY | DATE | | | |
| | | CITY OF POMPAÑO BEACH | | |
| | | SCALE: N.T.S. | | 210-3 |



Printed copies of this document are not considered signed and sealed and must be signed on any electronic copies.

Digitally signed by Bealinda M Pell
DN: c=US, o=Unaffiliated,
dnQualifier=A01410C0000018E2E
86C258002F48A, cn=Bealinda M
Pell
Date: 2024.08.20 16:10:03 -04'00'

